

## Provisions

### Preliminary

1. Development shall be in accordance with the City of Rockingham Local Planning Scheme No. 2 ('LPS 2') and the Residential Design Codes ('R-Codes') for the relevant density code.
2. The 'Deemed-to-Comply' requirements of the R-Codes are varied as shown on this LDP.
3. Lots that are not marked as subject of this LDP are shown for illustrative purposes only.

### Variations to the residential design codes

4. Refer table overleaf.

### Other built form provisions

#### Garages and Vehicular Access

5. Vehicular access must be taken from the laneway, where one is provided, with the exception of Lots 18, 37, 97, 107, 168, 182, 190 and 204 which may take access from the primary street or the laneway.
6. Garages are to be located as per the locations designated on the Local Development Plan. Minor variations to the locations may be permitted.
7. Carports are not permitted.

#### Building Height

8. For Lots 11 – 17, 19 – 20, 23 – 24, 31 – 32, 35 – 36, 98 – 105, 137 – 142, 160 – 167, 183 – 189 and 259 – 272, (as shown on the LDP) two storey development is mandatory.

#### Golf Course / Public Open Space Interface Lots

9. The finished level of all of the lots with an interface to the public open space must be elevated a minimum of 500mm above the adjoining public open space.
10. Dwellings are to be designed to incorporate at least one habitable room window overlooking the primary street and/or public open space.
11. Two storey development adjacent to the golf course is encouraged to promote passive surveillance.

#### Storage and Refuse

12. Refuse collection is to occur from the rear laneway for those lots which abut laneway reserves. Collection from the primary or secondary streets is only to occur where laneway frontage does not exist.
13. Refuse/storage areas are to be fully integrated with the design of the building. Refuse storage areas shall be screened from view from the public realm.

#### Fencing

14. For laneway lots and lots abutting public open space and the golf course, uniform fencing shall be constructed by the developer which is visually permeable above a height of 1.2 meters.
15. Where fencing has been installed by the developer, modifications to fences are not permitted.

#### Landscaping

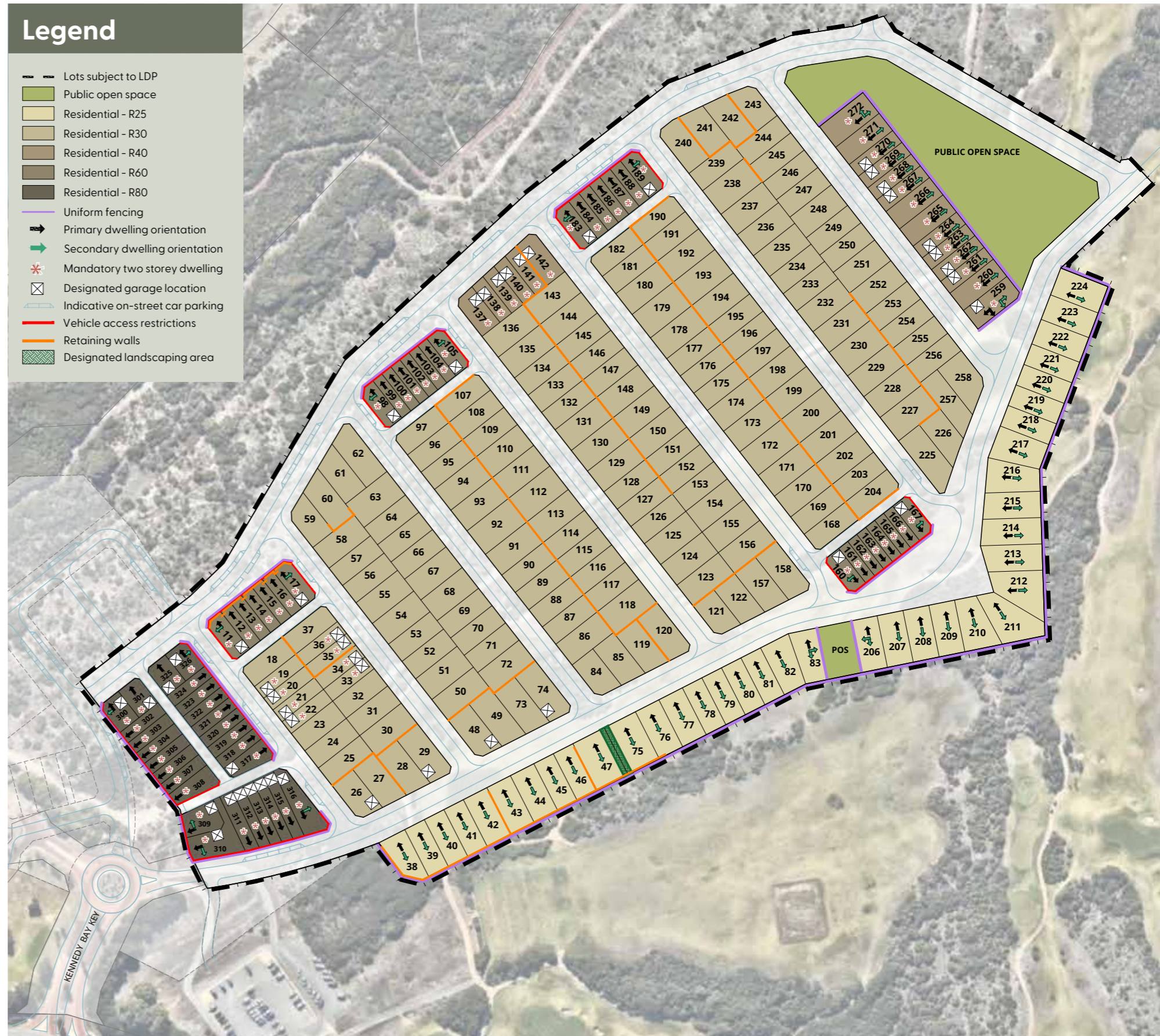
16. The Designated Landscaping Area shown on Lots 47 and 75 is to be kept free of any dwellings and / or structures, with the exception of boundary fencing to a distance of 5m.
17. For lots with a frontage of 8.5m or less, the street setback area is to include a minimum of 30% landscaping which is not to consist of any impervious surfaces (being brick and other solid paving, artificial turf and concrete).

#### Bushfire Management

18. The land subject to this LDP is within a bushfire prone area, as designated by the Department of Fire and Emergency Services. Those lots identified on this LDP as being subject to a Bushfire Management Plan require a Bushfire Attack Level Assessment and certification to be provided in conjunction with the Application for Building Permit, in accordance with the Australian Standard 3959.
19. This LDP shall be read in conjunction with the approved Bushfire Management Plan ('BMP') and any relevant addenda. (Bushfire Safety Consulting, April 2021).

## Legend

- Lots subject to LDP
- Public open space
- Residential - R25
- Residential - R30
- Residential - R40
- Residential - R60
- Residential - R80
- Uniform fencing
- Primary dwelling orientation
- Secondary dwelling orientation
- Mandatory two storey dwelling
- Designated garage location
- Indicative on-street car parking
- Vehicle access restrictions
- Retaining walls
- Designated landscaping area





Provisions							
R-Code	Street setback and front fences	Lot boundary setback	Open space and outdoor living area	Garage setback and width and vehicular access	Parking	Overshadowing	Privacy
<b>R25</b>	<p>4m minimum, no average</p> <p>2m to porch / veranda, no maximum length</p> <p>1m minimum to secondary street</p>	<p><b>Boundary setbacks</b></p> <p>1.2m for wall height 3.5m or less with major openings</p> <p>1m for wall height 3.5 or less without major openings</p>	<p>An outdoor living area (OLA) with an area of 10% of the lot size or 20m<sup>2</sup>, whichever is greater, directly accessible from a habitable room of the dwelling and located behind the street setback area.</p> <p>At least 60% of the OLA must be uncovered and includes areas under eaves which adjoin uncovered areas</p> <p>The OLA has a minimum 3m length and width dimension</p> <p>No other R-Codes site cover standards apply</p>	<p><b>Front load</b></p> <p>4.5m garage setback from the primary street and 1.5m from a secondary street</p> <p>The garage setback from the primary street may be reduced to 4m where an existing or planned footpath or shared path is located more than 0.5m from the street boundary</p>	Two on-site bays	<p>No maximum overshadowing for wall height 3.5m or less.</p> <p>No maximum overshadowing for wall height greater than 3.5m where overshadowing is confined to the front half of the lot.</p> <p>If overshadowing intrudes into rear half of the lot, shadow cast does not exceed 35%</p>	R-Codes clause 5.4.1 C1.1 applies, however the setback distances are 3m to bedrooms and studies, 4.5m to major openings to habitable rooms other than bedrooms and studies and 6m to unenclosed outdoor active habitable spaces.
<b>R30</b>	<p>4m minimum, no average</p> <p>2m to porch / veranda / balcony, no maximum length</p> <p>1m minimum to secondary street / laneway</p>	<p><b>Boundary setbacks</b></p> <p>1.2m for wall height 3.5m or less with major openings</p> <p>1m for wall height 3.5 or less without major openings</p> <p>For front loaded lots with a street frontage of 8.5m, 7m maximum boundary wall height for a maximum length of 18m</p>	<p>An outdoor living area (OLA) with an area of 10% of the lot size or 20m<sup>2</sup>, whichever is greater, directly accessible from a habitable room of the dwelling and located behind the street setback area.</p> <p>At least 60% of the OLA must be uncovered and includes areas under eaves which adjoin uncovered areas</p> <p>The OLA has a minimum 3m length and width dimension</p> <p>No other R-Codes site cover standards apply</p>	<p><b>Front load</b></p> <p>4.5m garage setback from the primary street and 1.5m from a secondary street</p> <p>The garage setback from the primary street may be reduced to 4m where an existing or planned footpath or shared path is located more than 0.5m from the street boundary</p> <p>For front loaded lots with street frontages of 8.5m, a double garage is permitted to for a maximum width of 6m as viewed from the street, where a dwelling is constructed to a minimum building height of 2-storeys, subject to:</p> <ul style="list-style-type: none"> <li>- Garage setback a minimum of 0.5m behind the building alignment</li> <li>- A major opening to a habitable room directly facing the primary street,</li> <li>- no vehicular crossover wider than 4.5m where it meets the street</li> </ul>	Two on-site bays	<p>No maximum overshadowing for wall height 3.5m or less.</p> <p>No maximum overshadowing for wall height greater than 3.5m where overshadowing is confined to the front half of the lot.</p> <p>If overshadowing intrudes into rear half of the lot, shadow cast does not exceed 35%</p>	R-Codes clause 5.4.1 C1.1 applies, however the setback distances are 3m to bedrooms and studies, 4.5m to major openings to habitable rooms other than bedrooms and studies and 6m to unenclosed outdoor active habitable spaces.

## Provisions

R-Code	Street setback and front fences	Lot boundary setback	Open space and outdoor living area	Garage setback and width and vehicular access	Parking	Overshadowing	Privacy
<b>R40</b>	<p>2m minimum, no average</p> <p>1m to porch / veranda / balcony, no maximum length</p> <p>1m minimum to secondary street / laneway</p>	<p><b>Boundary setbacks</b></p> <p>1.2m for wall height 3.5m or less with major openings</p> <p>1m for wall height 3.5 or less without major openings</p> <p><b>Boundary walls</b></p> <p>To both side boundaries subject to:</p> <ul style="list-style-type: none"> <li>- No maximum length to one side boundary;</li> <li>- 2/3 max length to second side boundary for wall height 3.5m or less.</li> </ul> <p>For front loaded lots with a street frontage of 8.5m, 7m maximum boundary wall height for a maximum length of 18m</p>	<p>An outdoor living area (OLA) with an area of 10% of the lot size or 20m<sup>2</sup>, whichever is greater, directly accessible from a habitable room of the dwelling and located behind the street setback area.</p> <p>At least 60% of the OLA must be uncovered and includes areas under eaves which adjoin uncovered areas</p> <p>The OLA has a minimum 3m length and width dimension</p> <p>No other R-Codes site cover standards apply</p>	<p><b>Front load</b></p> <p>4.5m garage setback from the primary street and 1.5m from a secondary street</p> <p>The garage setback from the primary street may be reduced to 4m where an existing or planned footpath or shared path is located more than 0.5m from the street boundary</p> <p>For front loaded lots with street frontages of 8.5m, a double garage is permitted to for a maximum width of 6m as viewed from the street, where a dwelling is constructed to a minimum building height of 2-storeys, subject to:</p> <ul style="list-style-type: none"> <li>- Garage setback a minimum of 0.5m behind the building alignment</li> <li>- A major opening to a habitable room directly facing the primary street,</li> <li>- no vehicular crossover wider than 4.5m where it meets the street</li> </ul>	Two on-site bays	<p>No maximum overshadowing for wall height 3.5m or less.</p> <p>No maximum overshadowing for wall height greater than 3.5m where overshadowing is confined to the front half of the lot.</p> <p>If overshadowing intrudes into rear half of the lot, shadow cast does not exceed 35%</p>	No privacy provisions apply
<b>R60 &amp; R80</b>	<p>2m minimum, no average</p> <p>1m to porch / veranda / balcony, no maximum length</p> <p>1m minimum to secondary street / laneway</p>	<p><b>Boundary setbacks</b></p> <p>1.2m for wall height 3.5m or less with major openings</p> <p>1m for wall height 3.5 or less without major openings</p> <p><b>Boundary walls</b></p> <p>7m maximum boundary wall height to no maximum length to both side boundaries.</p>	<p>An outdoor living area (OLA) with an area of 10% of the lot size or 20m<sup>2</sup>, whichever is greater, directly accessible from a habitable room of the dwelling and located behind the street setback area, except for those lots orientated North-West to allow for potential ocean views.</p> <p>At least 60% of the OLA must be uncovered and includes areas under eaves which adjoin uncovered areas</p> <p>The OLA has a minimum 3m length and width dimension</p> <p>No other R-Codes site cover standards apply</p>	<p><b>Rear load</b></p> <p>1.0m garage setback to laneway</p> <p><b>Front load</b></p> <p>4.5m garage setback from the primary street and 1.5m from a secondary street</p> <p>The garage setback from the primary street may be reduced to 4m where an existing or planned footpath or shared path is located more than 0.5m from the street boundary</p>	Two on-site bays	No maximum overshadowing	No privacy provisions apply