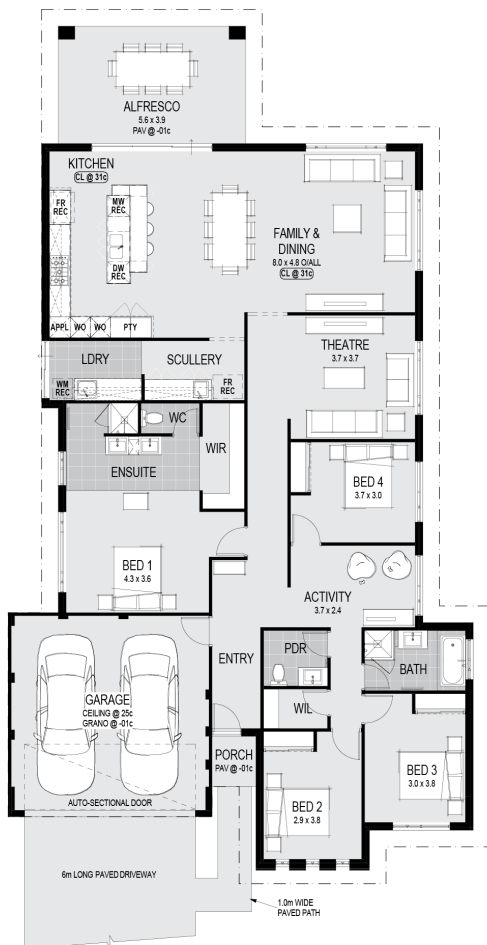


Portland - Perth Luxury

4 2 2 186 sqm

Facade name: Modern

House Plan:



LOT #30

Kennedy Bay

Address: Maritime Terrace, Port Kennedy, 6172



450 m²

House and land package price:

From **\$684,990***

About package:

- \$50,000 LUXURY KITCHEN**
- Electrolux Double Wall Ovens
 - Electrolux 900mm 5 Burner Glass Gas Cooktop
 - Electrolux Integrated Rangehood
 - 1200mm Deep Multi-Level Island Bench with Waterfall Ends
 - Choice of Multiple Stone Benchtops
 - European High Gloss or Super Matte Cabinetry
 - Double Laminate Pantry
 - Lift Up Overhead Cupboards
 - Combination of Cutlery, Plate and Pot Drawers
 - Microwave Recess with Pot Drawer Below
 - Undermount Sink & Pull Out Bin
 - Aluminium Integrated Finger Grip Handles
 - European Designer Mixer Tap
- PLUS MUCH MORE**
- Ford & Doonan Reverse Cycle Air Con
 - Luxury Laundry with Stone Benchtops & Overhead Cupboards
 - Main Area Floor Tiles & Loop Pile Carpet
 - Profiled Internal Doors
 - Stainless Steel Inset Through in Laundry Cabinets
 - Advanced LED Downlights
 - High Ceilings
 - Mirrored Robe Sliding Doors
 - Choice of 5 Feature Elevations
 - Trilock Entry Handle to Front Door
 - European Design Fitting & Fixtures & High Gloss Cabinetry

ENQUIRE NOW:

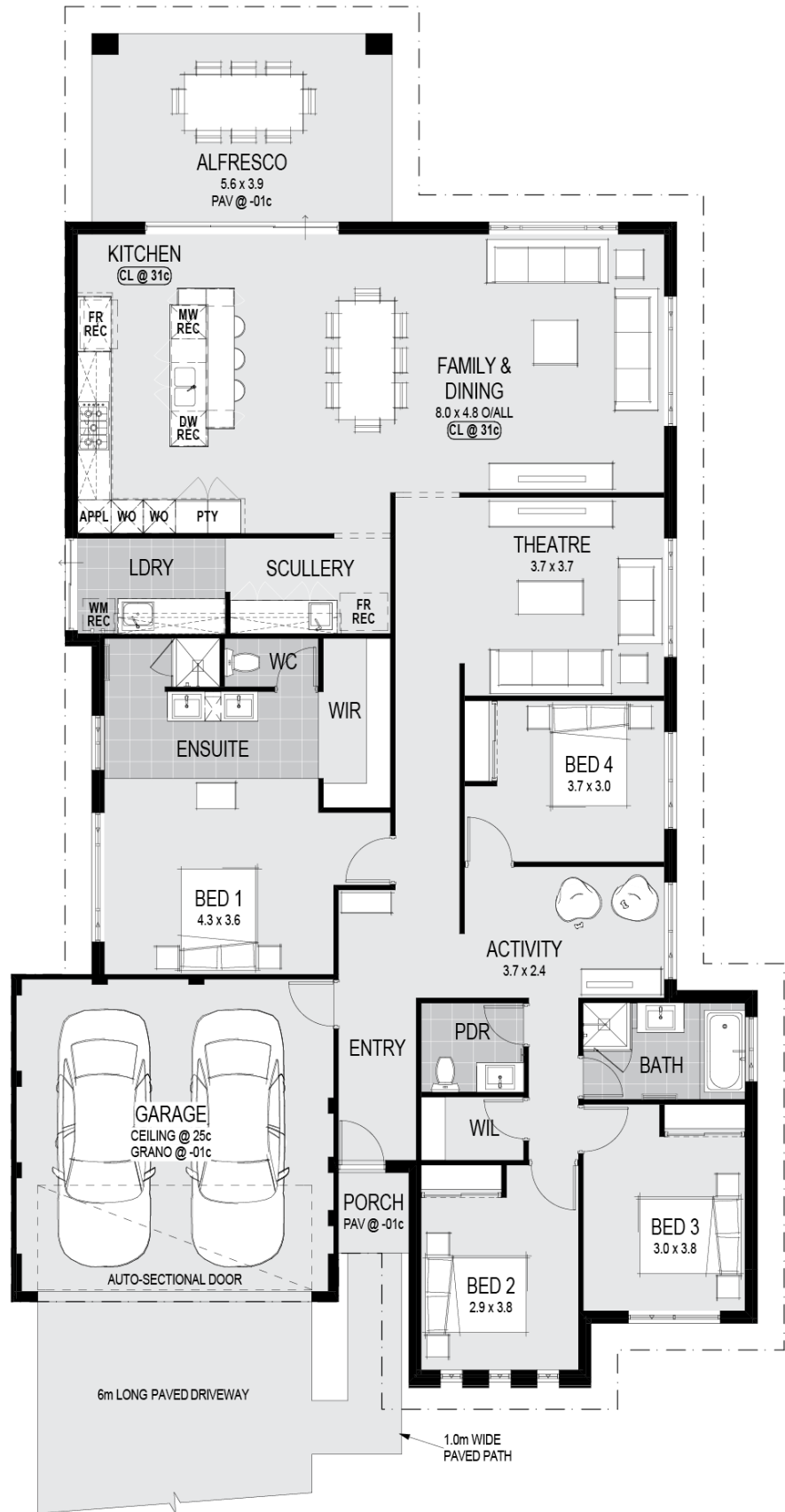
Home Group • P: 13 14 14 • E: customerservice@homegroup.com.au



*All Images and plans depicted are for illustrative purposes only and are subject to change. This work or any part of it may not be reproduced or copied in any form without the prior written consent of Home Group. © Home Group Pty Ltd BRN 101180 *All Prices and specifications shown are subject to change without notice and are subject to final confirmation upon the terms of any agreement with Home Group at the time of purchase. *All Land is subject to availability and prices shown are subject to change without notice and are subject to final confirmation upon the terms of any agreement with the Developer & Home Group at the time of purchase. *Price shown is less the \$10,000 FHOG For full terms and conditions applicable please see www.homegroup.com.au/terms.

House Features:

- ✓ See this floorplan on display, contact us to find out more.
- ✓ Ask me about the promotional upgrades available with this floorplan..
- ✓ \$80k Luxury Inclusions:
Luxury Kitchen, Reverse Cycle A/C, High Ceilings, Tiling, Carpets, Stone Tops Throughout, Plus Much More!!!
- ✓ Luxury Kitchen complete with 1200mm multi-level Island bench, Overhead Cabinets, Double Wall Ovens, European Cabinetry, Stone Tops
- ✓ Great 4 x 2 floorplan with Theatre
- ✓ Daikin Reverse-Cycle Multi Zone Air-Con
- ✓ Stone Bench Tops Throughout
- ✓ 30 Year Structural Warranty
- ✓ 450x450 Porcelain Floor Tiles
- ✓ LED Downlights Throughout
- ✓ High Ceilings to Living Areas
- ✓ Choice of 5 Feature Elevations with Acrylic Texture Coat Render
- ✓ Loop Pile Carpet with Underlay
- ✓ European Style Fixtures & Fittings Throughout



ENQUIRE NOW:

Home Group • P: 13 14 14 • E: customerservice@homegroup.com.au