



The Kennedy



BLUEPRINT HOMES (WA) PTY LTD

11 Delawney St, Balcatta WA 6021
 PO Box 772, Balcatta WA 6914
 6241 4888
blueprinthomes.com.au

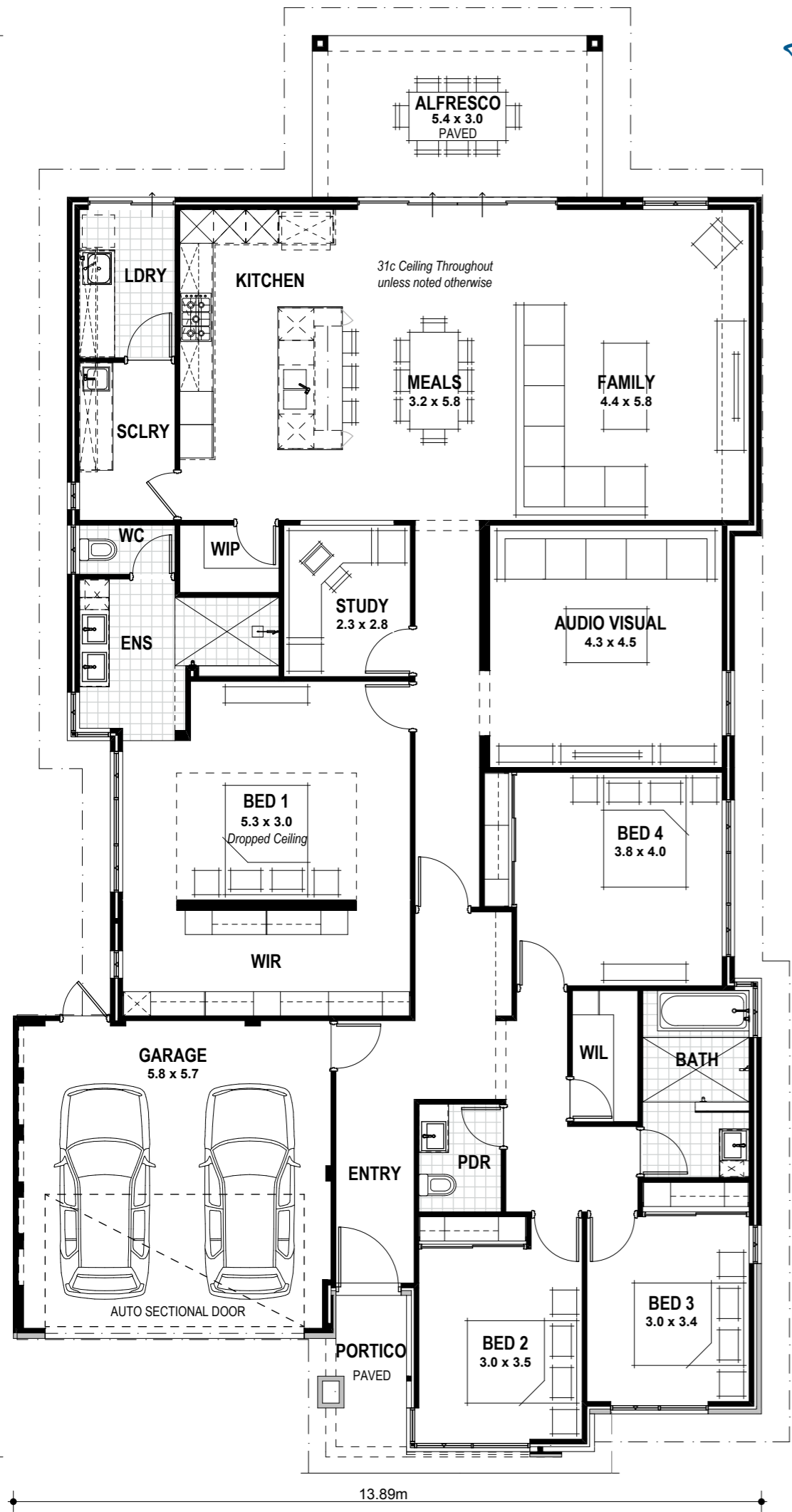
Disclaimer: This information is accurate at time of printing. All details are to be confirmed during your consultation with your Blueprint representative and your final plans and addenda will represent what you have purchased.
 09/2022_BP0749_BRN11904



9440 1800
blueprinthomes.com.au

It's *better* building
 with **Blueprint**

26.39m



The Kennedy

22 Tidal Drive,
Port Kennedy
(Kennedy Bay Estate)

4

2

2

VITAL STATS

Living area 267m²
(including Alfresco)

Total area 302m²
(excluding eaves)

Scale 1:100

NAME

SIGNATURE

DATE / /

The Kennedy Specification

STANDARD INCLUSIONS

- Home Owners Indemnity insurance
- H.I.A. fixed Building Contract
- 6 Star compliant home
- 4 month maintenance period
- Re-Peg to site (to new subdivisions)
- Contour survey completed on your block
- Building Permit and Water Corporation application fees included
- Termite treatment and certificate
- Double clay brick construction
- 2 course Blueprint Homes range external face bricks
- Rolled brick joints in cream mortar
- Your choice of Blueprint Homes standard COLORBOND® metal roof range
- COLORBOND® fascia, downpipes and slotted gutters
- 25° roof pitch as standard
- H2 treated roof timbers
- R4.0 ceiling insulation to home including Garage (excluding Portico and Alfresco)
- Painting specification includes ceilings and cornice, doors and door frames, eaves, woodwork and meterbox
- Feature Front Elevation
- Acrylic render to Front Elevation (including return to Bedroom 3) (excludes Garage internally and Garage zero lot wall)
- Builders Kennedy range painted weatherboards to sections of Front Elevation
- Double Garage with 31c high 10mm plasterboard ceiling and concrete hardstand
- Blueprint Homes standard range COLORBOND® auto sectional door with 3 controllers to Garage
- Up to 6m long full width paved Driveway, Portico, Alfresco and 1m wide path (from Builders 60mm standard range) (with exception of rear Garage designs which include a 2m long Driveway as standard)
- 31c high ceilings as displayed
- Dropped ceiling to section of Bedroom 1
- Dropped bulkheads to Entry Passage Recess, Ensuite, Kitchen, Scullery, Laundry and Family
- 10mm plasterboard ceiling to Portico and Garage
- 10mm plasterboard 3c recessed ceiling to Alfresco
- 75mm Coved cornice throughout internally, to Portico, to Alfresco and to Garage
- 10mm Aquacheck lining to all wet area walls
- 10mm plasterboard lining to all remaining internal walls (excluding Garage)
- Quality Dowell powder-coated aluminium sliding glass doors
- Quality Dowell powder-coated aluminium breeze lock windows
- Flyscreens to all aluminium opening windows and sliding doors
- 28c high x 1200 wide feature aluminium single lite (clear glass) front door with electronic smart lock handle and frame to Front Entry
- 28c high aluminium 4 panel double sliding door to Meals / Alfresco
- 28c high aluminium sliding door to Laundry
- 28c high head to all aluminium windows
- 2340mm high solidcore flush panel door with Builders standard range metal door frame to Garage/Entry and to Rear Garage
- Gainsborough Trilock Contemporary door hardware to Garage/Entry and Rear Garage doors
- 2340mm high Brentwood (clear glass) door and Builders standard range metal door frame between Kitchen & Scullery
- 2340mm high hollowcore flush panel doors and Builders standard range metal door frames to remainder internally
- Gainsborough Choice range lever door handles to internal doors
- Choice of framed vinyl/mirrored/Supa Whitekote sliders to Minor Bedroom robes
- Blueprint Homes built-in shelving system (colour: Slate Grey) to Master Suite walk-in robe
- Blueprint Homes built-in shelving system (colour: Slate Grey) to Minor Bedroom robes
- Built-in Linen with 4 white lined shelves to Walk in Linen
- Built-in Linen with 4 white lined shelves to Walk in Pantry
- Future connect pack including TV, phone and internet point
- Double power points throughout excluding Garage and appliance locations
- 3 external light points, 1 Garage ceiling light point and ample internal light points
- Blueprint Homes Range Clipsal Iconic light switches and power points
- Upgrade colour to Clipsal Iconic power points to Kitchen (splashback areas only) and to Scullery
- Flumed exhaust fan to Ensuite, Ensuite WC, Bathroom and Powder
- Hard wired smoke detectors
- 2 safety switches
- Lock and viewing panels to both meter boxes
- Choice of Chrome or Matte Black European inspired mixers throughout
- Dishwasher provision with cold tap and single power point
- Automatic washing machine taps
- 6 star gas continuous flow 26L hot water system
- 2 external garden taps

KITCHEN

- 20mm stone benchtops from Builders Luxury specification to Kitchen
- Crystal White Matt, Diamond White Gloss or Diamond White Gloss/Portland Ash doors, drawer fronts and all exposed edges to Kitchen
- Builders Luxury Kitchen specification handles to Kitchen
- Pull-out double bin
- Double sized Blum® cutlery tray
- Laminated Pantry with four shelves
- Microwave recess with single power point
- Pot drawers
- Overhead cupboards
- 2650mm long x 1200mm wide island bench with waterfall ends
- Soft closing doors and drawers
- Two Electrolux 600mm dark stainless steel ovens
- Electrolux 900mm black ceramic glass hotplate
- Electrolux 800mm stainless steel concealed rangehood
- European inspired double bowl undermount stainless steel sink
- Builders standard range 6mm Vasari porcelain splashback to Kitchen

SCULLERY

- 20mm stone benchtops from Builders Luxury specification to Scullery
- Crystal White Matt or Diamond White Gloss doors and all exposed edges to Scullery
- Builders Luxury specification bar style handles to Scullery
- Overhead cupboards
- Soft closing doors
- European inspired single bowl above mount stainless steel sink
- Builders standard range 6mm Vasari porcelain splashback to Scullery

LAUNDRY, ENSUITE, BATHROOM AND POWDER

- 20mm stone benchtops from Builders Luxury specification to Laundry, Ensuite, Bathroom and Powder
- Crystal White Matt or Diamond White Gloss doors and all exposed edges to Laundry
- Diamond White Gloss, Portland Ash or Oakwood doors, drawer fronts and all exposed edges to Ensuite, Bathroom and Powder
- Builders Luxury specification bar style handles to Laundry
- Builders Luxury specification aluminium finger grip handles to Ensuite, Bathroom and Powder
- Soft closing doors and drawers (where applicable)
- 2m high tiling to Ensuite shower recess
- 2m high tiling to Bathroom shower recess/bath area
- 2m high tiling between Bathroom mirror and shower recess
- 1.1m high tiling to remainder of Ensuite and Bathroom
- 1.1m high tiling to Ensuite WC and Powder
- Floor tiling to Laundry, Ensuite, Ensuite WC, Bathroom and Powder
- Tiled ledge to Ensuite shower recess
- Tiled low wall with niche to Bathroom shower recess
- Frameless 10mm laminated clear glazed shower screen panel to Bathroom
- Slimline frame mirrors to Ensuite, Bathroom and Powder
- European inspired 45ltr stainless steel trough to Laundry
- European inspired above counter china basins to Ensuite, Bathroom and Powder
- Choice of Chrome or Matte Black European inspired dual shower square head combo to Ensuite
- Choice of Chrome or Matte Black European inspired rail shower to Bathroom
- European inspired rimless dual flush china toilet suite with 4 star rating and soft close seat to Ensuite WC and Powder
- Choice of Chrome or Matte Black European inspired double towel rails, toilet roll holders and hand towel ring
- Tile insert floor wastes
- Hobless showers to Ensuite and Bathroom
- Mitred tiled edges throughout
- 1700mm long inset bath to Bathroom